

## Job Site Report

### 24" Directional Bore Maryland

#### Dirax performs – coming and going.

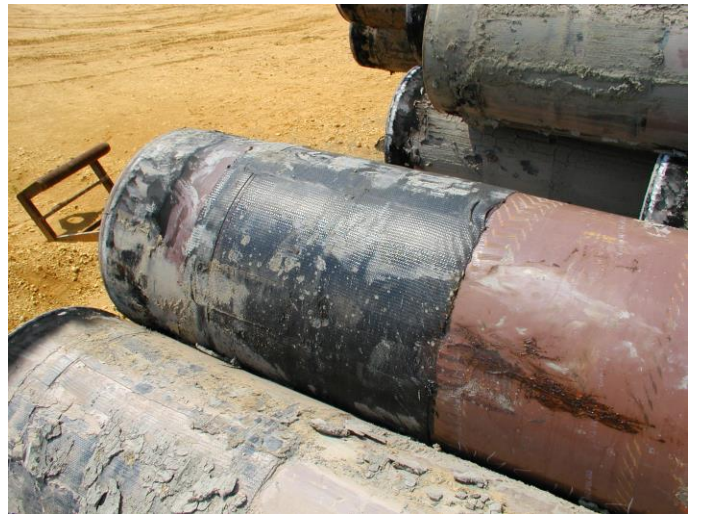
The Maryland project consisted of about 9 miles x 24" and an additional 9,000' x 24" directional bores. Covalece's WPCT shrink sleeve was used on the direct buried portion and Covalece's Dirax was used on the directional bores.

One of the directional bores encountered an obstruction, which forced them to back the pipe out. They were only able to recover half of the pipe and the remainder was abandon in place. The pipe that was recovered was so badly damaged it was not suitable for service. Dead lines had to be met so the Gas Utility ordered new pipe and Dirax for immediate delivery. They plan to start welding up the pipe the following week and will be working extended days (dawn to dusk), 7 days a week until the bore is 100% completed. Dirax sleeves arrived on site just as the pipe arrived along with field assistance to expedite the application process.

The pictures on the right are an example of the forces that this bore went through. During the bore they hit an obstruction and could only back out the 1200'. As you can see, the Dirax sleeves held up well on the back pull while the main line barrier coating did not fare so well.



**Recovered Directional Drill Pipe**



**Dirax coming & going**



**Note damage to main line barrier coating**